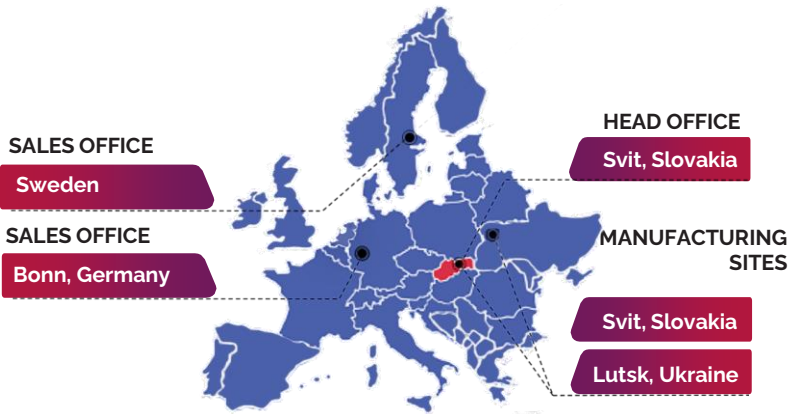


LEADING PACKAGING CONVERTER IN CENTRAL & EASTERN EUROPE



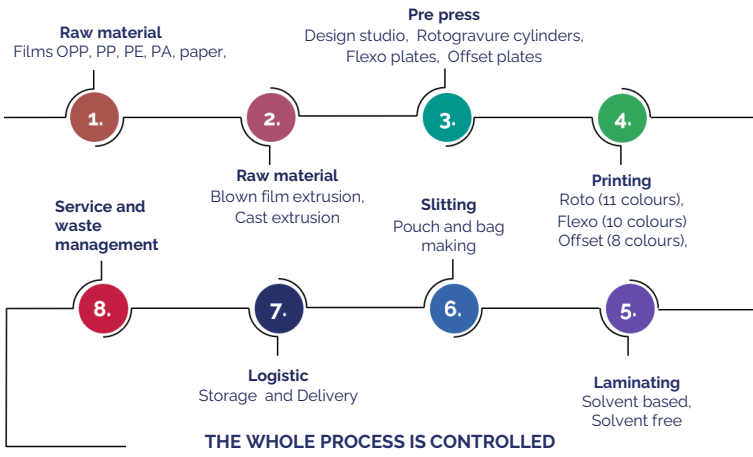
2021 Turnover ~ 100 mil. €

Employees 760

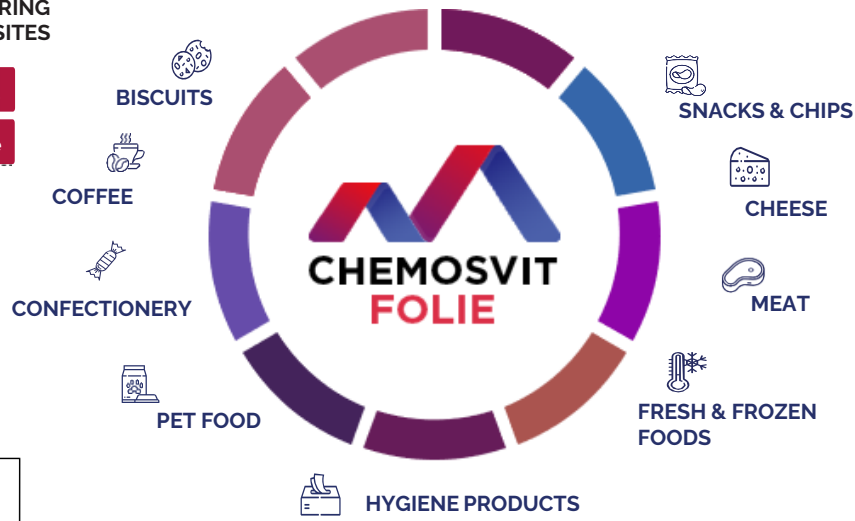
Food application 78 %

Non-food application 22 %

PRODUCTION



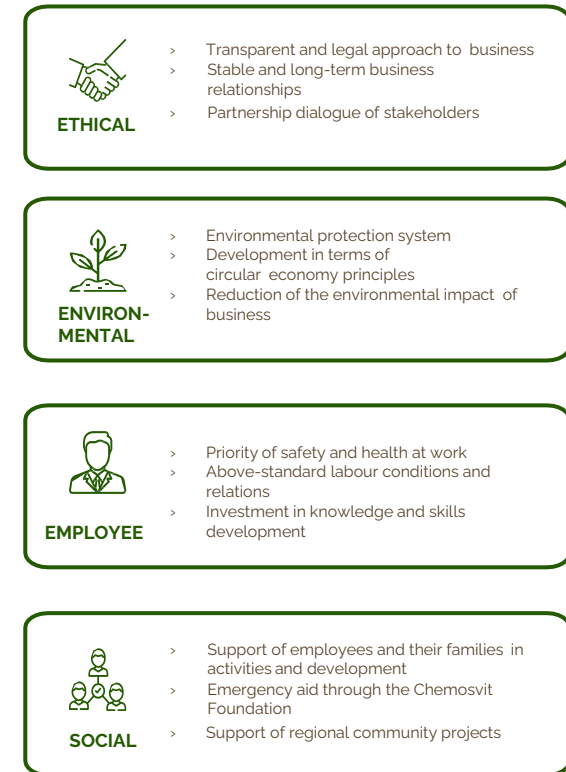
THE WHOLE PROCESS IS CONTROLLED
BY CENTRAL ANALYTIC LAB AND PRODUCTION LAB
in cooperation with independent authorities



SUSTAINABLE PACKAGING



PILLARS OF SUSTAINABILITY



CUSTOMERS REFERENCE

